

intertextile

SHANGHAI home textiles

中国国际家用纺织品及辅料(秋冬)博览会

China International Trade Fair for Home Textiles and Accessories – Autumn Edition

Travel Pocket Guide

28 – 31 August 2019

National Exhibition and Convention Center (Shanghai), China

Content

1) Show Information

2) Venue Location

3) Transportation

4) Official Hotel List

5) Official Carrier

6) Visa Invitation Letter

7) Attractions

8) Useful Phrases

9) Useful Websites

Show Information

intertextile
SHANGHAI home textiles

中国国际家用纺织品及辅料(秋冬)博览会
China International Trade Fair for Home Textiles and Accessories – Autumn Edition

Show Name

Intertextile Shanghai Home Textiles – Autumn Edition 2019

2019 中国国际家用纺织品及辅料 (秋冬) 博览会

Venue

National Exhibition and Convention Center (Shanghai) – NECC (SH)

Tel: +86 21 6700 8888

Fax: +86 21 6700 8877

West Entrance: 1888 Zhuguang Road, Shanghai, China
(connected with Metro Line 2 exit)

South Entrance: 168 Yinggang East Road, Shanghai, China

North Entrance: 333 Songze Avenue Road, Shanghai, China

East Entrance: 111 Laigang Road, Shanghai, China

国家会展中心(上海)

总机 : +86 21 6700 8888

传真 : +86 21 6700 8877

西门: 中国上海诸光路1888号

南门: 中国上海盈港东路168号

北门: 中国上海崧泽大道333号

东门: 中国上海涞港路111号

Opening Hours

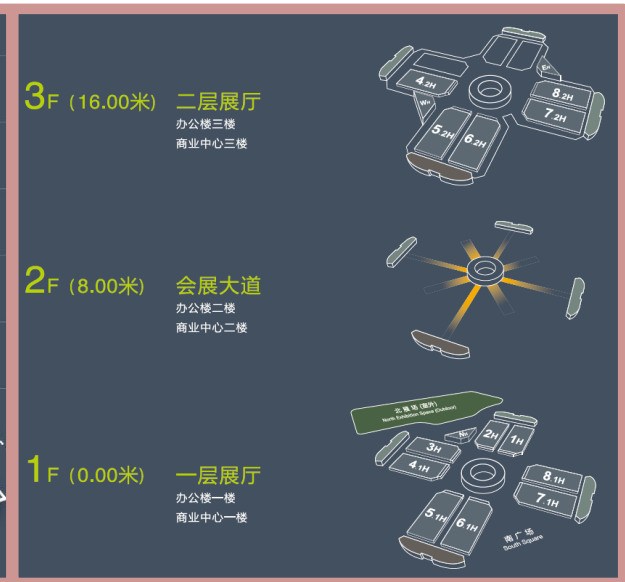
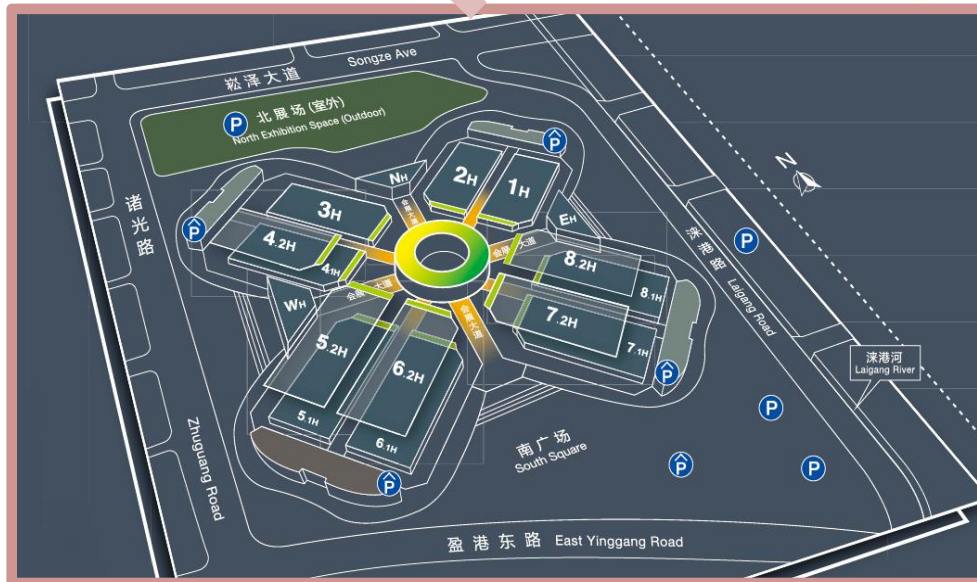
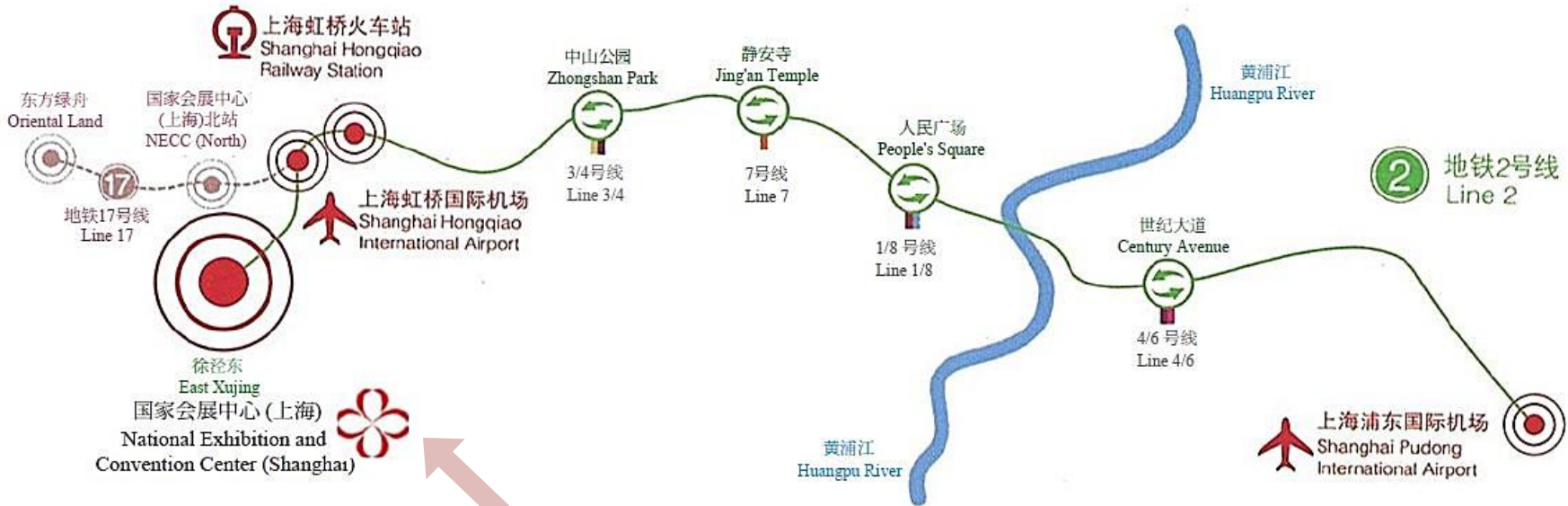
28 August 2019 (Wednesday) 9:00am – 6:00pm

29 August 2019 (Thursday) 9:00am – 6:00pm

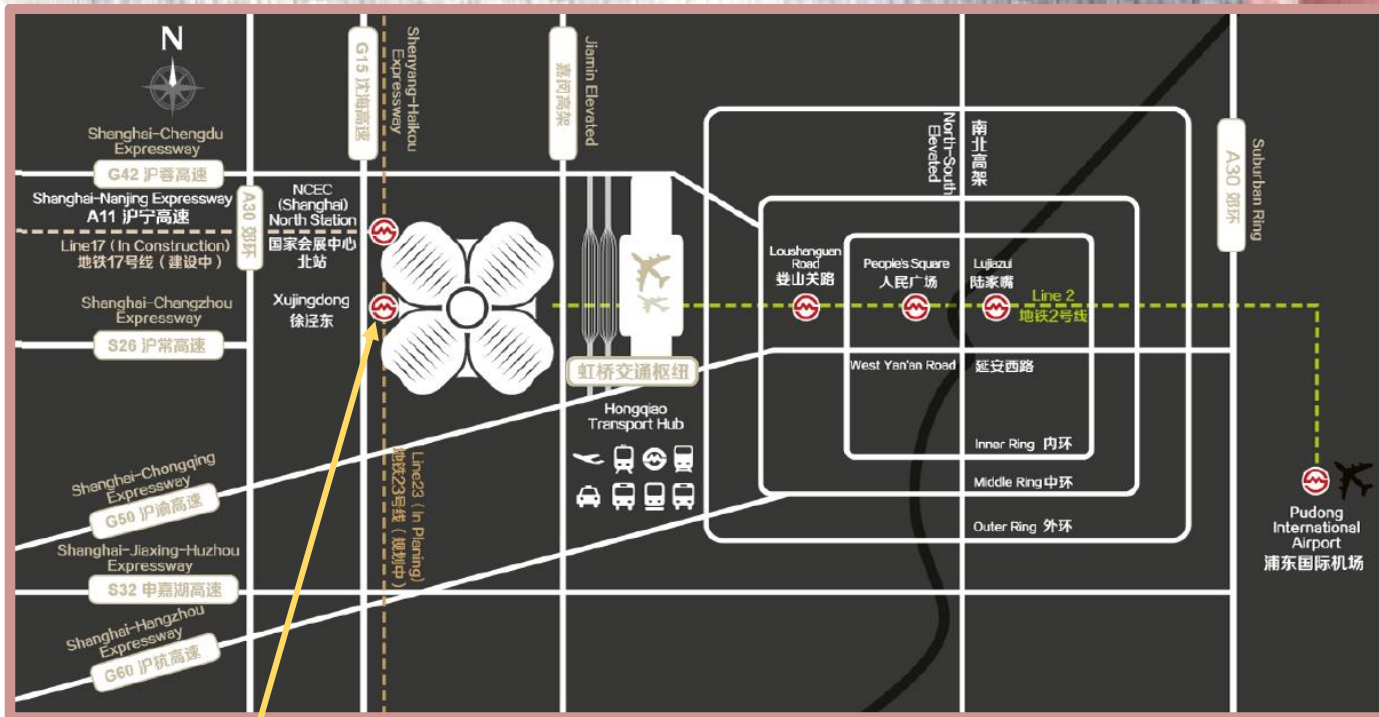
30 August 2019 (Friday) 9:00am – 6:00pm

31 August 2019 (Saturday) 9:00am – 2:00pm

Venue Location



Transportation



*Metro Line 2  Xujingdong/Xujing East Station (徐泾东站) is connected with West Entrance of Venue

Air

From the Hongqiao Airport (Terminal 2) --- Approximately 5 km

Taxi: about 15 minutes

Metro: Take Line 2 and get off at Xujingdong/East Xujing Metro Station (徐泾东站)

From Pudong International Airport --- Approximately 60 km

Taxi: About 90 minutes

Metro: Take Line 2 and get off at Xujingdong/ East Xujing Metro Station (徐泾东站)

Transportation (Con't)

Railway

From Shanghai Hongqiao Railway Station --- Approximately 3 km

Metro: Take Line 2 and get off at Xujingdong/East Xujing Metro Station (徐泾东站)

From Shanghai Railway Station --- Approximately 25 km

Metro: Take Line 1 to Renminguangchang/People's Square Station (人民广场), change to Line 2 and get off at Xujingdong/East Xujing Metro Station (徐泾东站)

From Shanghai South Railway Station --- Approximately 23 km

Metro: Take Line 1 to Renminguangchang/People's Square Station (人民广场), change to Line 2 and get off at Xujingdong/East Xujing Metro Station (徐泾东站)

Metro

Take Line 2 and get off at Xujingdong/Xujing East Station (徐泾东站)

Taxi

Please show the Chinese address of venue's **South Entrance** or **North Entrance** to taxi driver:

South Entrance:

请带我去:

国家会展中心(上海)南门
中国上海盈港东路168号

North Entrance:

请带我去:

国家会展中心(上海)北门
中国上海崧泽大道333号

Official Hotel List

Official Travel Agent : Shanghai Vision Expo & Meeting Solutions Co Ltd

Contact person: Ms. Jenny Zhang / Mr. Billy Xu

Email: jenny@shanghai-vision.com / billy@shanghai-vision.com

Tel: 86 (21) 5481 6051 / 5481 6052

Fax: 86 (21) 5481 6032

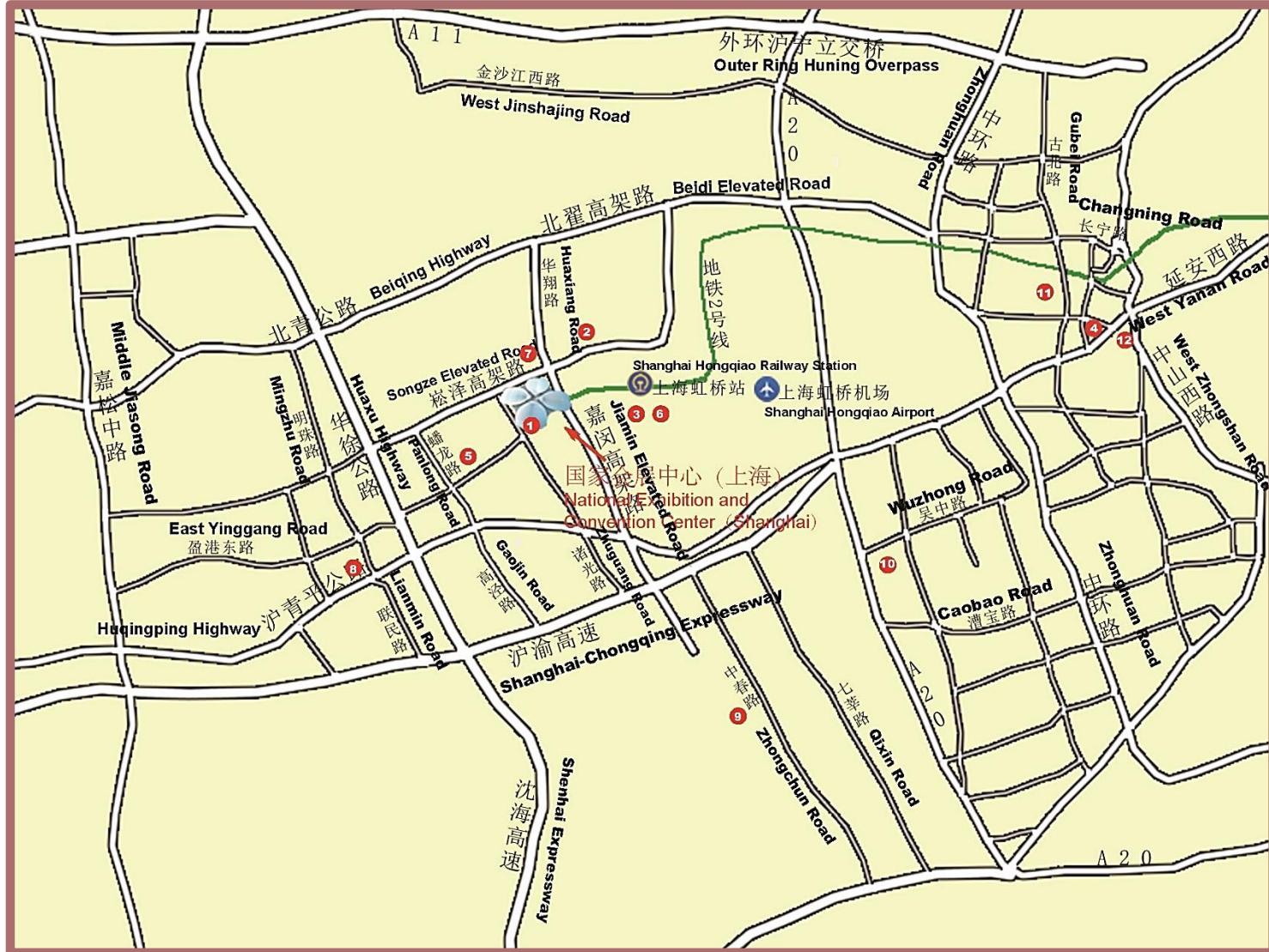
No	Name & Address of Hotel	Chinese Name & Address of Hotel	Distance from Hotel to Venue
1	InterContinental Shanghai NECC (5☆) 1700 Zhuguang Road, Shanghai	国家会展中心上海洲际酒店 (5☆) 上海市青浦区诸光路1700号	5 minutes On walk
2	Sofitel Shanghai Hongqiao (5☆) 666 Taihong Road, Shanghai	上海虹桥新华联索菲特大酒店 (5☆) 上海市闵行区泰虹路666号	7 minutes By taxi
3	Hotel Indigo Shanghai Hongqiao (5☆) No.43 Lane 188 Yonghong Road, Shanghai	上海虹桥英迪格酒店 (5☆) 上海市闵行区甬虹路188弄43号	10 minutes By taxi
4	Renaissance Yangtze Shanghai Hotel (5☆) 2099 Yan'an Xi Road, Shanghai	上海扬子江万丽大酒店 (5☆) 上海市长宁区延安西路2099号	35 minutes By taxi
5	Courtyard by Marriott Hongqiao (4☆) 333 Panwen Road, Shanghai	上海虹桥中建万怡酒店(4☆) 上海市青浦区蟠文路333号	5 minutes By taxi
6	Hyatt Place Shanghai Hongqiao CBD (4☆) 9 Shenhong Road, Shanghai	上海虹桥商务区凯悦嘉轩酒店(4☆) 上海市青浦区申虹路9号	7 minutes By taxi
7	Howard Johnson Hongqiao Airport Hotel (4☆) 1989 Huaxiang Road, Shanghai	上海虹桥金古源豪生大酒店 (4☆) 上海闵行区华翔路1989号	10 minutes By taxi
8	Holiday Inn Shanghai West (4☆) 2000 Huqingping Road, Shanghai	上海西郊假日酒店 (4☆) 上海青浦区沪青平公路2000号	15 minutes By taxi
9	Yuloon Hotel (4☆) 6699 Zhongchun Road, Shanghai	上海悦隆酒店 (4☆) 上海闵行区中春路6699号	20 minutes By taxi
10	Artyzen Habitat Hongqiao Shanghai (4☆) 3999-5 Hongxin Road, Shanghai	上海雅辰悦居酒店 (4☆) 上海市闵行区虹莘路3999-5号	30 minutes By taxi
11	Grand Mercure Hongqiao Shanghai (4☆) 369 Xianxia Road, Shanghai	上海虹桥雅高美爵酒店 (4☆) 上海长宁区仙霞路369号	35 minutes By taxi
12	Golden Tulip Shanghai Rainbow (4☆) No.2000 Yan'an West Road Shanghai	上海虹桥郁锦香宾馆(4☆) 上海长宁区延安西路2000号	35 minutes By taxi

* You may contact the official travel agent for reservation at special rate, or click [HERE](#) for more information.

*Please refer to next page for Hotel location map

Official Hotel List (Con't)

Hotel location map



Official Carrier

intertextile
SHANGHAI home textiles

中国国际家用纺织品及辅料(秋冬)博览会
China International Trade Fair for Home Textiles and Accessories - Autumn Edition



[Book online](#) and reserve with MICE Event Code “**MICE136**” or contact your nearest [Cathay Pacific](#)
and [Cathay Dragon](#) reservations office and quote the event code to receive this offer.

Visa Invitation Letter

All foreign exhibitors and visitors to PR China must apply for visa and comply with the health requirement on entering into China. Please ensure that all your colleagues and accompanies have already obtained the relevant visa prior to departure.

Visitor

Please contact our official travel agency for more details and cost for visa invitation letter:

Official Travel Agent:

Shanghai Vision Expo & Meeting Solutions Co., Ltd.

Contact person: Ms. Jenny Zhang / Mr. Billy Xu

Tel: 86 (21) 5481 6051 / 5481 6052

Fax: 86 (21) 5481 6032

Email: jenny@shanghai-vision.com / billy@shanghai-vision.com

Address: Unit 703, New Caohejing Building, 509 Caobao Road, Shanghai 200233, China

Exhibitor

Please contact the organiser for more information of the visa invitation letter

Attractions



The Bund 外滩

The Bund is regarded as the symbol of Shanghai; it is a really beautiful and special place which worth visiting. It starts from the Baidu Bridge to the East Jinling Road. Walking alongside the Bund, on the west shore of the Huangpu River, the Oriental Pearl TV Tower and the Jin Mao Tower can be seen on the opposite side of the Bund.

Transportation:

Subway Line 2 (get off at East Nanjing Road Station), walk towards The Bund direction for around 15 minutes.

District: Puxi



Nanjing Road 南京路

Nanjing Road is considered to be the 'No. 1 commercial street in China', and has been a landmark of the city for a long time.

Transportation:

To East Nanjing Road

Bus No.: 14, 33, 37, 65, 66, 108, 123, 135, 220, 251, 305, 306, 307, 314, 317, 300, 868, 910, 928, 929, 940, Tourism bus route 8

Subway Line 2 (get off at East Nanjing Road Station)

To West Nanjing Road

Bus No: 23, 24, 36, 57, 76, 128, 148, 206, 304, 323, 451, 738

Subway Line 2 (get off at West Nanjing Road Station)

District: Puxi

Attractions (Con't)



Oriental Pearl TV Tower 东方明珠塔

The Oriental Pearl TV Tower is the modern symbol of Shanghai. It is also the tallest TV tower in Asia, situated beside the Huangpu River, just opposite the Bund. The Tower has fifteen observatory levels; contains a history museum, a revolving restaurant and a shopping mall.

Address: No. 2, Lane 504, Lujiazui Road, Pudong, Shanghai

Transportation:

Bus No.: 81, 797, 961, Cailu Special Line, Luchuan Special Line or Tourism Line 3 (get off at Oriental Pearl Station),

Subway Line 1 (get off at South Huangpi Road Station)

Subway Line 2 (get off at Lujiazui Station)

District: Pudong



Yuyuan Garden and City God Temple 豫园及上海城隍庙

The Yuyuan Garden features Ming Dynasty and Qing Dynasty architectural styles, it is the largest ancient garden in Shanghai. Located close by the garden is the City God Temple (上海城隍庙). Beside the temple and the garden, there are a lot of shops where you can find local snacks and traditional arts and crafts.

Address: 132 Anren Street, Shanghai

Transportation:

Bus No.: 11, 26, 64, 71, 145, 581, 715, 730, 736, 801, 926, 929, 932, 969, 980, Franchuan line (get off a Yuyuan station)

Subway Line 10 (get off at Yuyuan Station)

District: Puxi

Useful Phrases

English	Chinese	Putonghua
General		
How are you?	你好吗?	nǐ hǎo ma?
Good morning	早安	zǎo ān
Good afternoon	午安	wǔ ān
Good night	晚安	wǎn 'ān
Thank you	谢谢	xiè xie
Yes / No	是 / 不是	shì / bú shì
National Exhibition and Convention Center (Shanghai)	国家会展中心(上海)	guó jiā huì zhǎn zhōng xīn (shàng hǎi)
Take taxi	打的	dǎ dí
Bus	公车	gōng chē
Metro	地铁	dì tiě
Ferry	船	chuán
How much is it?	多少钱	duō shǎo qián
Cheaper	便宜一点	pián yi yī diǎn
Toilet	洗手间	xǐ shǒu jiān

Useful Phrases (Con't)

English	Chinese	Putonghua
Restaurant		
Order, please	点菜	diǎn cài
Menu	菜单	cài dān
Check, please	请结帐	qǐng jié zhàng
Receipt, please	请给收据	qǐng gěi shōu jù
Water	水	shuǐ
Tea	茶	chá
Coffee	咖啡	kā fēi
Milk	牛奶	niú nǎi
Cream	奶油	nǎi yóu
Sugar	糖	táng
Salt	盐	yán
Pepper	胡椒粉	hú jiāo fěn
Bread	面包	miàn bāo
Soup	汤	tāng
Vegetable	菜	cài
Seafood	海鲜	hǎi xiān
Beef	牛肉	niú ròu
Chicken	鸡肉	jī ròu
Pork	猪肉	zhū ròu
Lamb	羊肉	yáng ròu
Vegetarian	素菜	sù cài
Potato	土豆	tǔ dòu
Rice	米饭	mǐ fàn
Noodles	面条	miàn tiáo
Sweet	甜	tián
Sour	酸	suān
Bitter	苦	kǔ
Spicy	辣	là

Useful Websites

intertextile
SHANGHAI home textiles

中国国际家用纺织品及辅料(秋冬)博览会
China International Trade Fair for Home Textiles and Accessories - Autumn Edition

Intertextile Shanghai Home Textiles:

<http://www.intertextilehome.com/>

Venue – NECC(SH) Website:

<http://www.necsh.com/cecsh/?lang=en>

Shanghai Metro:

service.shmetro.com/en

Shanghai attractions:

www.travelchinaguide.com/cityguides/shanghai.htm

Shanghai restaurants:

<https://en.tripadvisor.com.hk/Restaurants-g308272-Shanghai.html>

A flowing, translucent fabric with a red and white checkered pattern, draped across the frame. The fabric is rendered with soft, realistic shading and highlights, giving it a three-dimensional, ethereal appearance. It flows from the top right towards the bottom left, with several loops and folds. The text "See you in Shanghai!" is written in a cursive, reddish-brown font across the middle of the fabric.

See you in Shanghai!